



广东阿玛达智能装备有限公司

Guangdong Armdax Intelligent Equipment Co., Ltd.

地 址: 广东省佛山市狮山镇南海平谦产业园A13栋

电 话: 18924530086

网 址: www.armdax.cn

邮 箱: info@armdax.com

Add: Building A13, Nanhai Pingqian Industrial Park, Shishan Town, Foshan City, Guangdong Province, China.

Tel: 86 13590526045

Whatsapp: 86 13590526045

Web: www.armdax.cn

Email: info@armdax.com



AUTOMATION SOLUTION

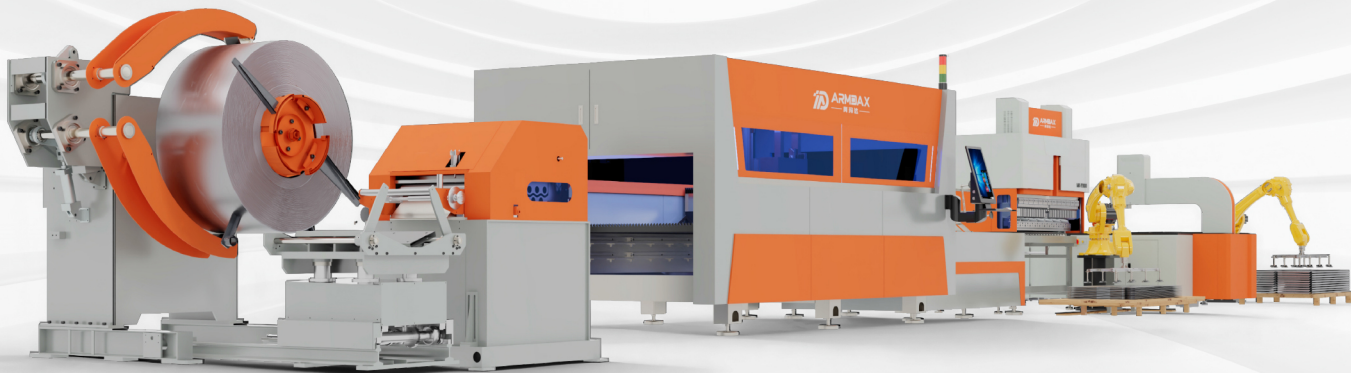
Provider for the Sheet Metal Industry.

从制造到智造

钣金行业自动化解决方案提供商



ARM DAX



Breathe Intelligence into Sheet Metal.

为钣金加工注入智慧的灵魂

我们满怀对制造的热情，专注于折弯、激光切割、自动化技术于一体的钣金加工智能制造专家，为客户优化各类复杂工件的成型难题。

无论面对何种挑战，阿玛达科技始终为客户提供全方位的钣金加工、折弯解决方案。

Driven by a profound passion for manufacturing, we specialize in intelligent sheet metal fabrication, integrating bending, laser cutting, and automation technologies to optimize the forming process for complex workpieces.

No matter the challenge, Armadax Technology consistently delivers comprehensive automated bending solutions tailored to every client's needs.



ABOUT US

公司简介

广东阿玛达是全球钣金加工设备设计与制造领域的卓越领导者，凭借业内布局完善的产品线，为客户提供覆盖折弯中心、翻板机、激光切割机及滚压成型机的高品质装备与高效率智能制造整体解决方案。

成立于2016年，位于佛山南海平前工业园区，毗邻广州，交通便利。占地面积15000㎡，总人数160人，其中设备开发和硬件设计人员占比30%以上。未来还将不断扩大规模，致力于创造更高的产值与行业价值。

广东阿玛达将高端智能系统与传统加工设备深度融合，重新定义了自动化、智能化、数字化的钣金生产新模式，我们以此深度赋能客户，助力其优化生产流程，加速迈向智能化工厂的未来。

广东阿玛达——革新制造流程，超越客户期待

Armdax Machinery is a global leader in the design and manufacturing of sheet metal processing equipment. With its well-established product portfolio, the company provides comprehensive solutions including press brakes, panel benders, laser cutting machines, and roll forming systems, delivering high-quality equipment and efficient intelligent manufacturing solutions to customers.

Established in 2016 and located in Foshan's Nanhai Pingqian Industrial Park adjacent to Guangzhou with convenient transportation access, the company occupies 15,000 square meters and employs 160 staff, with over 30% dedicated to equipment development and hardware design. The company continues to expand its scale, committed to creating higher production value and industry value.

By deeply integrating advanced intelligent systems with traditional processing equipment, Armdax Machinery has redefined a new paradigm for automated, intelligent, and digitalized sheet metal production. This approach deeply empowers customers, helping them optimize production processes and accelerate their journey toward the future of smart factories.

Armdax Machinery - Innovating manufacturing processes, exceeding customer expectations.

15000 m²

工厂面积
Factory area

160 +

现有员工
Existing employees

1300 +

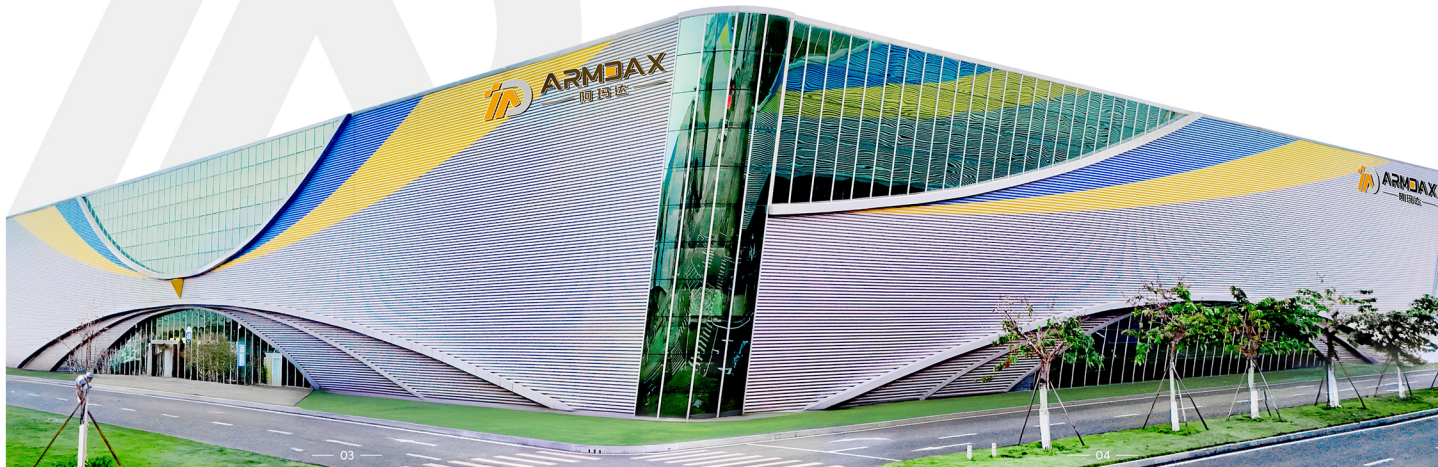
服务客户
Serve customers

30 %

技术人才占比
Proportion of technical talents

10000 台

年生产能力
Annual production capacity



HONORS

荣誉之最

国家级殊荣 | 世界级资质

National level honors and world-class qualifications



CORPORATE CULTURE

企业文化



我们的使命和价值观

Our Mission And Values

在广东阿玛达, 我们的使命是通过提供先进的解决方案, 帮助客户实现其生产目标。我们的员工确保我们的机器在全球范围内的高可靠性。

At Armadax, our mission is to empower our customers to achieve their production goals through advanced, intelligent solutions. Our dedicated team ensures the exceptional reliability and performance of our machines worldwide.



发展愿景

Our Vision

成为全球领先的钣金智能装备服务商

To become the world's leading provider of intelligent sheet metal equipment and solutions.



经营理念

Management Philosophy



客户成就至上
Customer Success First



持续技术创新
Continuous Technological Innovation



匠心智造精品
Precision Engineering

COMPREHENSIVE SERVICE SYSTEM

全面的服务体系

我们的客户已经投资于被公认为世界上顶尖钣金加工设备。为了确保他们的投资获得尽可能高的回报，广东阿玛达提供了一套首屈一指的全面支持服务。帮助客户实现可靠、高效和灵活的生产，持续制造高品质金属产品，铸就持久商业成功。

Our clients have invested in what is recognized as the world's finest sheet metal processing equipment. To ensure they achieve the highest possible return on this investment, Guangdong Amada provides a premier, comprehensive support system. We are dedicated to helping our customers achieve reliable, efficient, and flexible production, enabling the consistent manufacturing of high-quality metal products and building lasting commercial success.

售前服务

PRE-SALES SERVICE | PLANNING YOUR FUTURE,
STARTING WITH SELECTION

我们专注于提供前瞻性的全面解决方案。在您决策之初，我们的团队即深入参与，协助研究与分析最优工艺与设备配置，并提供专业的免费打样服务，为您的成功奠定坚实基础。

We specialize in forward-looking, comprehensive solutions. From the outset of your decision-making process, our team engages deeply to research and analyze the optimal process and equipment configuration. We complement this with professional, complimentary prototyping services, laying a solid foundation for your success.



售后服务

AFTER-SALES SERVICE

我们恪守“一切为了客户”的理念，秉承“快速响应、及时处理、彻底解决”的宗旨。服务涵盖从专业的现场安装调试、系统的操作培训，到建立完整的全生产周期服务档案，确保您在后续生产中始终获得及时、可靠的支持，保障设备的持续高效运行。

We adhere to the "Customer First" philosophy and are committed to the principles of Rapid Response, Timely Resolution, and Thorough Problem-Solving. Our comprehensive service covers everything from professional on-site installation and commissioning to systematic operational training. We also establish complete lifecycle service records for every project, ensuring you receive prompt and reliable support throughout your production journey, thereby guaranteeing the continuous and efficient operation of your equipment.



SERVICE PROCESS

服务流程



BENDING CENTER

柔性折弯中心

AX-Series



极致高效 Ultimate efficiency

0.2秒/刀的折弯循环,效率相较传统设备提升3-5倍。

A bending cycle of 0.2 seconds per blade increases efficiency by 3-5 times compared to traditional equipment.



高精度控制 High precision control

±0.01mm的重复定位精度确保产品的一致性。

A repeat positioning accuracy of ±0.01mm ensures product consistency.



简易操控 Easy to operate

集成EtherCAT高速总线,编程更快捷,操作更简单。

Integrated EtherCAT high-speed bus for faster programming and simpler operation.

■ 万能的刀具系统

Versatile Tooling System

灵活应对多样化折弯成型满足您的复杂生产需求

Adapts flexibly to diverse bending and forming requirements, meeting your most complex production demands.



向上折弯
Bend upwards



向下折弯
Bend down



压弯折弯
Flatten and bend

■ 柔性折弯中心技术参数

Technical parameters of flexible bending center

型号Model	AX-1200	AX-1500	AX-2000	AP-2500	AP-3000
最快折弯速度 Fastest Bend Speed	0.2秒/刀 0.2sec/blade	0.2秒/刀 0.2sec/blade	0.2秒/刀 0.2sec/blade	0.2秒/刀 0.2sec/blade	0.2秒/刀 0.2sec/blade
折弯宽度 Bend Width	1200mm	1500mm	2000mm	2500mm	3000mm
折弯高度 Bend Height	170mm	170mm	170mm	170mm	170mm
折弯厚度 Bending Thickness	铁板 Iron plate	1.2mm	2mm	2mm	2mm
	不锈钢 Stainless steel	0.8mm	1.5mm	1.5mm	1.5mm
	铝板 Aluminum plate	2mm	3mm	3mm	3mm
成型最小尺寸 Minimum Forming Size	320mm*150mm				
折弯角度 Bending Angle	0-180°				
最小圆弧半径 Minimum Arc Radius	1.2mm				
数控系统 Numerical Control System	SL300-PX 品牌: 纽蓝客				
轴数 Number of Axes	吸盘系列: 标配12轴并联动 Suction Cup Series: 12-Axis 压臂系列: 标配12轴并联动 Press Arm Series: 12-Axis				
峰值功率Peak Power	约8KW	约15KW	约20KW	约25KW	约25KW
平均功率Average Power	约1KW	约2KW	约5KW	约8KW	约8KW
外形尺寸(长*宽*高) Overall Dimensions	3000*2269*2200mm	3400*2670*2250mm	3400*2670*2250mm	3450*3380*2320mm	3450*3380*2320mm
机器重量Machine Weight	约7吨 About 7t	约9吨 About 9t	约12吨 About 12t	约15吨 About 15t	约18吨 About 18t

折弯工艺Bending Process

Complex sheet metal bending requirements such as: up-bending, down-bending, arc bends, hemming, return flanges, and closed profiles.

PRESS ARM BENDING CENTER

压臂折弯中心

AP-Series



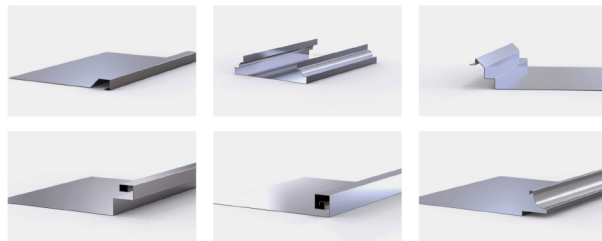
集成EtherCAT高速总线技术。作为当前领先的工业以太网协议，EtherCAT凭借高度灵活的拓扑架构，实现卓越性能与极速响应。该系统兼容标准以太网结构，仅靠单一以太网接口即可高效运行，无需额外配置交换机或转换模块，大幅提升集成简洁性与通信效率。

Integrated with EtherCAT high-speed bus technology. As a leading industrial Ethernet protocol, EtherCAT delivers exceptional performance and rapid response through its highly flexible topology. The system is compatible with standard Ethernet infrastructure and operates efficiently with just a single Ethernet interface, requiring no additional switches or conversion modules. This significantly enhances integration simplicity and communication efficiency.



折弯类型

Type of Bending



应用领域

Application Areas



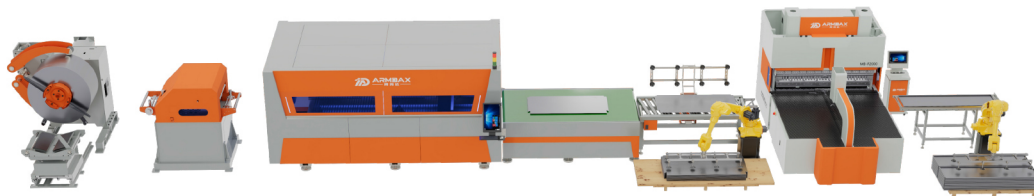
AUTOMATED BENDING PRODUCTION LINE

自动化折弯生产线

ATP系列是一条集卷材激光切割、折弯中心与机械手上料、码垛于一体的全自动板材加工生产线，专为不同行业精密钣金组件的高效生产而打造。该生产线实现从原材料到成品的自动化生产，支持模块化灵活配置，各功能单元既可独立运行，也可灵活扩展焊接等工艺模块，最大程度提升系统整体性能，助力企业实现高效、稳定的无人化连续作业。

ATP Series is a fully automated sheet metal processing line that integrates coil laser cutting, a bending center, and robotic loading and palletizing. Designed for the efficient production of precision sheet metal components across various industries, this line enables automated production from raw material to finished product.

Featuring a modular and flexible configuration, each functional unit can operate independently or be easily expanded with additional process modules such as welding. This maximizes overall system performance and supports efficient, stable, unmanned continuous operation for industrial enterprises.



AHX-Series

GANTRY PALLETIZING & BENDING CENTER
桁架码垛&折弯中心



ARP-Series

ROBOT & BENDING CENTER
机械手&折弯中心



SHEET FOLDING CENTER

高速翻板式折弯中心

AF-Series



低成本投入
Low Investment Cost

优化的设计与配置, 显著降低
初始投资与拥有成本。

Optimized design and configuration
significantly reduce initial investment
and total cost of ownership.



高回报产出
High Return Output

高效的生产品拍高效率产出,
四面八刀, 1.1分钟/6件。

Efficient production cycles and
automation capabilities ensure
maximum productivity and profitability.



持久稳定可靠
Durable & Reliable Performance

优质钢材与严谨工艺, 奠定设备
长久稳定的运行基石。

High-quality steel components and
meticulous craftsmanship form the
foundation for long-term, stable operation.

■ 可集成: 双工位、卷材激光/冲剪线、机械手、桁架码垛

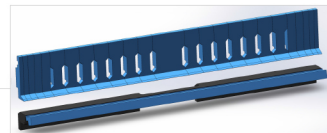
Can be integrated: dual station, coil laser/punching line, robotic arm, truss palletizing

AFX系列是一款专为向上折弯工艺打造的柔性翻板式折弯中心。它以更经济的投入与更高效的生产速率, 成为橱柜、文件柜、金属门板等工件的理想选择。设备关键床身采用高强度钢板, 并经过严格的退火处理, 有效消除内应力, 保障设备在长期负荷运转下的卓越稳定性与耐用性。

AFX Series is a flexible, panel-type bending center specifically engineered for upward flanging processes. It delivers a more economical investment and higher production rates, making it the ideal choice for workpieces such as cabinets, filing cabinets, and metal door panels. The machine's critical bed structure is constructed from high-strength steel plate and undergoes a rigorous annealing process. This effectively relieves internal stresses, ensuring exceptional stability and long-term durability under continuous high-load operation.

翻边机折弯刀示意图

Schematic diagram of bending knife for flanging machine



折弯示意图

Bending Diagram



■ 翻板式折弯中心技术参数

Technical parameters of flip plate bending center

型号 Model	AF-X1200	AF-X1600	AF-X2000
最快折弯速度 Fastest Bend Speed	0.2秒/刀 0.2sec/bend	0.2秒/刀 0.2sec/bend	0.2秒/刀 0.2sec/bend
折弯宽度 Bend Width	1200mm	1600mm	2000mm
折弯高度 Bend Height	100mm	100mm	100mm
折弯厚度 Bending Thickness	不锈钢0.6mm Stainless Steel 0.6mm 铁板1.0mm Cold Plate 1.0mm 铝板1.2mm Aluminum Plate 1.2mm		
成型最小尺寸 Minimum Forming Size	200mm*140mm		
折弯角度 Bending Angle	0-180°		
最小圆弧半径 Minimum Arc Radius	1.2mm		
轴数 Number of Axes	标配9轴并开发联动 9-Axis		
外形尺寸(长*宽*高) Overall Dimensions	3000*2259*2200mm	3400*2770*2250mm	3450*3380*2320mm
机器重量 Machine Weight	约2.8吨 About 2.8t	约3.4吨 About 3.4t	约5.3吨 About 5.3t

折弯工艺 Bending Process

上折弯, 压死边, 圆弧等单向折弯要求
Upward bending, hemming, and arc (unidirectional bending requirements)

ELECTRIC SERVO PRESS

纯电伺服折弯机

AD-Series



价格
Price

能源消耗
Energy consumption

速度
Speed

周期时间
Cycle time

ECO

初期投资更高，但长期优势更大。
The initial investment is higher, but the long-term advantages are greater.

能源效率是一个重要的相关因素。
Energy efficiency is an important related factor.

- 电液
Electro-hydraulic
- 电液伺服
Electro-hydraulic servo
- 全电伺服
All electric servo

比较 COMPARATIVE

AFD系列全电伺服折弯机融合尖端驱动技术与刚性结构设计，搭载先进双伺服驱动系统及高承载丝杠导轨结构，带来超越传统油压机床的卓越运动性能与加工效率。整机通过三维软件 and 有限元分析软件 (Ansys) 进行最优化工工业设计，在确保极致精度与稳定性的同时，彻底摆脱液压油依赖，实现高效清洁的绿色生产，为您提供前所未有的高性能折弯体验。

AFD Series Electric Servo Press Brake integrates cutting-edge drive technology with rigid structural design, equipped with an advanced dual-servo drive system and high-load-capacity ball screw and guideway structure, delivering exceptional motion performance and processing efficiency that surpass traditional hydraulic press brakes. The entire machine undergoes optimized industrial design using 3D software and finite element analysis software (Ansys), ensuring extreme precision and stability while completely eliminating dependency on hydraulic oil. This enables highly efficient and clean green production, providing you with an unprecedented high-performance bending experience.

100%纯电力, 0%液压油

100% pure electric power, 0% hydraulic oil

节能高达 50%

Energy saving up to 50%

比液压折弯机, 速度提高了 35%

Up to 35% faster compared to a hydraulic press brake

维护、使用成本低

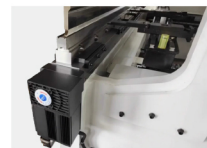
Low maintenance and operating costs

自动补偿工作台

Auto-compensating work table

内置高精度整体加凸下波浪条和分段式可前后调节上波浪条

Features a built-in high-precision integral crowned lower wave bar and segmented upper wave bar with fore-and-aft adjustability.



全电伺服折弯机技术参数

Technical parameters of fully electric servo bending machine

型号 Model	AD-3512	AD-4016	AD-6025	AD-10032
折弯压力 Bending Pressure	350tons	40tons	60tons	100tons
折弯长度 Bending Length	1200mm	1600mm	2500mm	3200mm
柱间距离 Distance between Columns	950mm	1250mm	2000mm	2800mm
喉口深度 Throat Depth	400mm	410mm	410mm	410mm
开口高度 Opening Height	430mm	470mm	470mm	470mm
Y轴快速速度 Y-axis Rapid Feed Speed	200mm/s	220mm/s	200mm/s	150mm/s
Y轴工进速度 Y-axis Working Feed Speed	50mm/s	50mm/s	50mm/s	50mm/s
Y轴回程速度 Y-axis Return Speed	200mm/s	220mm/s	200mm/s	180mm/s
X轴快速速度 X-axis Rapid Feed Speed	400mm/s	500mm/s	500mm/s	500mm/s
R轴快速速度 R-axis Rapid Feed Speed	200mm/s	200mm/s	200mm/s	200mm/s
Z1/Z2轴快速速度 Z1/Z2-axis Rapid Feed Speed	400mm/s	400mm/s	400mm/s	400mm/s
Y轴行程 Y-axis Stroke	180mm	200mm	200mm	200mm
X轴行程 X-axis Stroke	400mm	500mm	600mm	600mm
R轴行程 R-axis Stroke	140mm	200mm	200mm	200mm
Z1/Z2行程 Z1/Z2-axis Stroke	700mm	800mm	1800mm	2500mm
控制系统 Control System	SL100-P4/G	SL100-P4/G	SL100-P4/G	SL100-P4/G
装机容量 Installed Capacity	3KVA	3KVA	3KVA	3KVA
机床尺寸 (光机) Machine Tool Dimensions (Optical Machine)	1220 × 1250 × 2270mm	2400 × 1388 × 2439mm	2900 × 1388 × 2439mm	3600 × 1722 × 2664mm
机床重量 (光机) Machine Tool Weight (Optical Machine)	2500kg	3500kg	5300kg	7800kg

SINGLE-TABLE LASER CUTTING MACHINE

单台面激光切割机

 高精度
High Precision

 高效率
High Efficiency

 高强度
High Strength

01 卓越的光束质量, 使切割线条更精细、工作效率更高、加工质量更好;
Superior Beam Quality: Enables finer cutting lines, higher working efficiency, and superior processing quality.

04 自动故障报警保护显示功能, 使用更放心, 调整更便捷, 切割更完美;
Automatic Fault Alarm & Protection: Provides intuitive display for safer operation, easier adjustment, and optimal cutting.

02 采用全封闭恒温激光器工作环境, 更有效保证激光器的稳定工作;
Fully-Enclosed Thermostatic Environment: Ensures more stable laser operation for enhanced durability.

05 独有的穿孔气体控制技术, 解决了厚板的穿孔问题;
Exclusive Piercing Gas Control Technology: Effectively resolves thick-plate piercing challenges.

03 独有的转角能量跟随技术, 使尖角切割效果更完美;
Proprietary Corner Power Tracking: Achieves flawless cutting results on sharp corners.

06 配备高精度、高响应的驱动, 适合快速精密切割;
High-Precision, High-Response Drives: Ideal for high-speed and precision cutting applications.



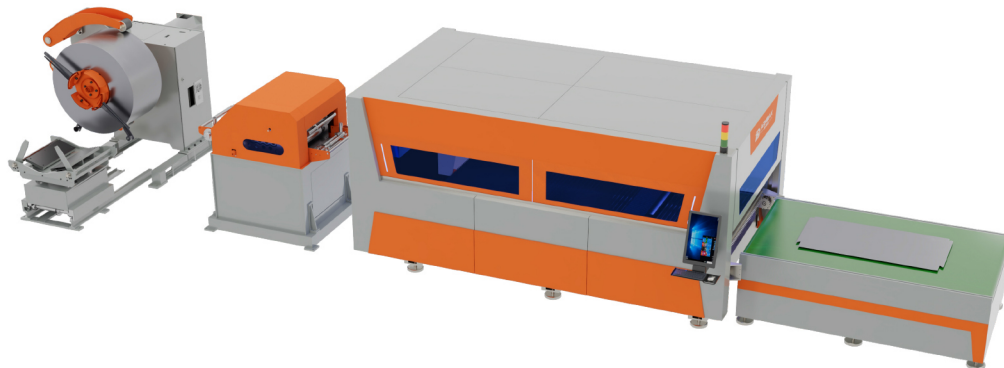
■ 单台面激光切割机技术参数 Technical parameters of single table laser cutting machine

型号Model	GN-3015 / 4020 / 6020 / 8025 / 10035
切割范围 Cutting range	可按要求定制(4m-30m内) Customizable according to requirements (within 4m-30m)
机械定位精度 Mechanical positioning accuracy	±0.12mm/m
机械重复定位精度 Mechanical repeat positioning accuracy	±0.1mm
*大定位速度(合成) *High positioning speed (synthesis)	80m/min
*大定位速度(合成) *High positioning speed (synthesis)	0.8G
Z轴行程 Z-axis travel	200mm
激光切割 Laser cutting	2000W-20KW

COIL LASER CUTTING PRODUCTION LINE

卷材激光切割生产线

ALC-Series



本生产线专为高效板材加工而设计,可将冷轧钢、镀锌钢、不锈钢等卷材,经开卷、矫平后,由精密送料系统配合激光切割头,直接加工成定制尺寸的板材。整套系统由数控系统集中控制,通过伺服电机与高精度丝杠实现进给长度的精准控制,有效提升切割效率,大幅减少传统装板时间。

该生产线专为高效板材加工而设计。它将冷轧钢、镀锌钢、不锈钢和其他卷材直接无缝展开、调平并送入激光切割系统,在一次集成生产中生产定制尺寸的板材。整个系统由数控系统集中控制,采用伺服电机和高精度滚珠丝杠,确保精确的进给长度控制。这显著提高了切割效率并大大减少了传统板材的装板时间。

用户可通过触摸屏人机界面轻松设定加工尺寸、切割参数、生产数量及速度。系统支持自动计数与停机功能,可在完成预设产量或整卷材料加工完毕后自动停止,实现智能化、连续化生产。

This production line is specifically designed for high-efficiency sheet metal processing. It seamlessly uncoils, levels, and feeds cold-rolled steel, galvanized steel, stainless steel, and other coil materials directly into a laser cutting system, producing custom-sized plates in a single, integrated operation. The entire system is centrally controlled by a CNC system, which utilizes servo motors and high-precision ball screws to ensure accurate feed length control. This significantly enhances cutting efficiency and drastically reduces traditional plate loading time.

Operators can easily input processing dimensions, cutting parameters, production quantity, and speed via the touch-screen HMI. The system supports automatic counting and shutdown functions, allowing it to stop automatically either after reaching the preset production quantity or upon completion of an entire coil, enabling intelligent and continuous manufacturing operations.

高效精密加工

High Efficiency & Precision

切割速度快,精度高,断面光滑,品质卓越

Fast cutting speed, high accuracy, smooth cut surface, and other superior quality.

卓越适应能力

Excellent Adaptability

不受工件形状与材料硬度限制,灵活应对各种加工需求

Unrestricted by workpiece shape or material hardness, offering flexible processing capabilities.

稳定易用操作

Stable and easy-to-use operation

运行稳定可靠,操作简便安全,加速产品研发周期

Stable and reliable operation, easy and safe operation, accelerating product development cycle

优质切割效果

Exceptional Cut Quality

切缝窄小,表面光洁,无材料损伤

Narrow kerf, smooth surface finish, and no material damage.

显著成本优势

Significant Cost Benefits

无需模具投入,材料利用率高,综合效益显著

No mold investment required, high material utilization, and notable overall cost-effectiveness.

强大兼容性

Powerful Compatibility

可与滚压成型、折弯中心、焊接、码垛等设备无缝集成

Enables seamless integration with roll forming machines, bending centers, welding equipment, palletizing systems, and more.